



SPECIALTY ENGINEERED AUTOMATION

TEXT UTILITIES

enhancing NX Drafting

Installation Guide

Table of Contents

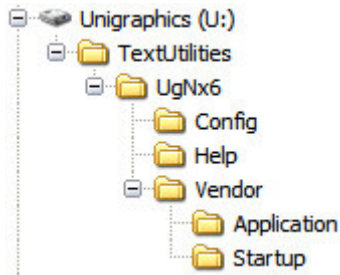
Standalone Application.....	2
Integrated Application.....	4
Execute Only.....	6

Standalone Application

Refer to this method when there is no existing NX customization, or you want **Text Utilities** to run in its own environment.

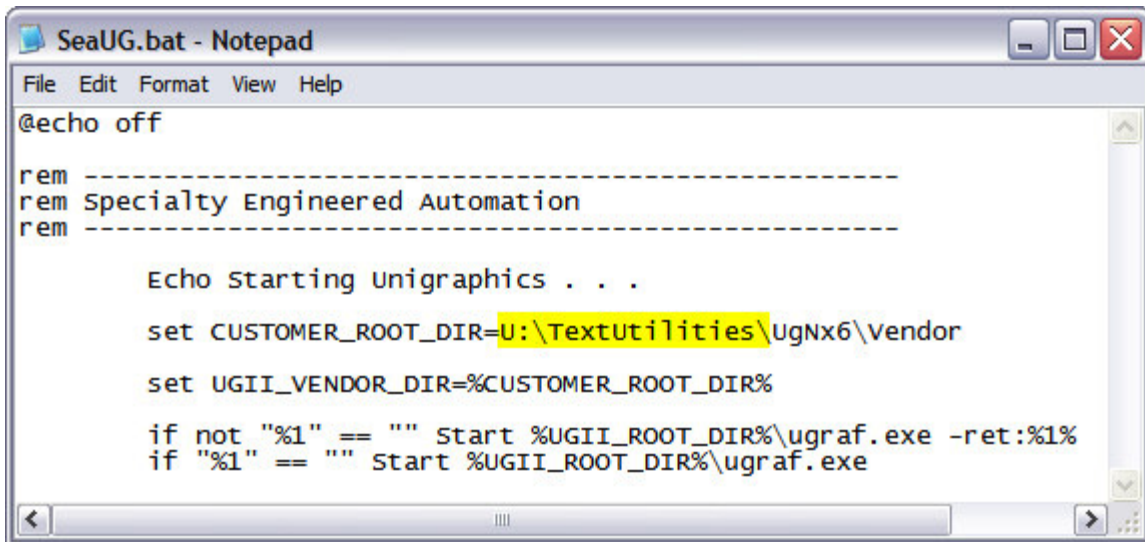
Extract the contents of the ZIP file (TextUtilities_UgNx6.zip) to a location of your choice.

In this example, it has been unzipped to the folder **U:\TextUtilities**, creating the folder structure as indicated below:



The **Help** folder contains the documentation for **Text Utilities** in the form of a CHM file. Double-click the file to launch. If the file fails to open, it is the result of a window's security patch. Copy the CHM file to a local drive and it will open.

Browse to the **Config** folder and open the file **SeaUG.bat** for editing. Replace the highlighted section in the image below with the location you have unzipped the files to.

A screenshot of a Notepad window titled 'SeaUG.bat - Notepad'. The window has a menu bar with 'File', 'Edit', 'Format', 'View', and 'Help'. The text content is as follows:

```
@echo off

rem -----
rem Specialty Engineered Automation
rem -----

    Echo Starting unigraphics . . .

    set CUSTOMER_ROOT_DIR=U:\TextUtilities\UgNx6\Vendor

    set UGII_VENDOR_DIR=%CUSTOMER_ROOT_DIR%

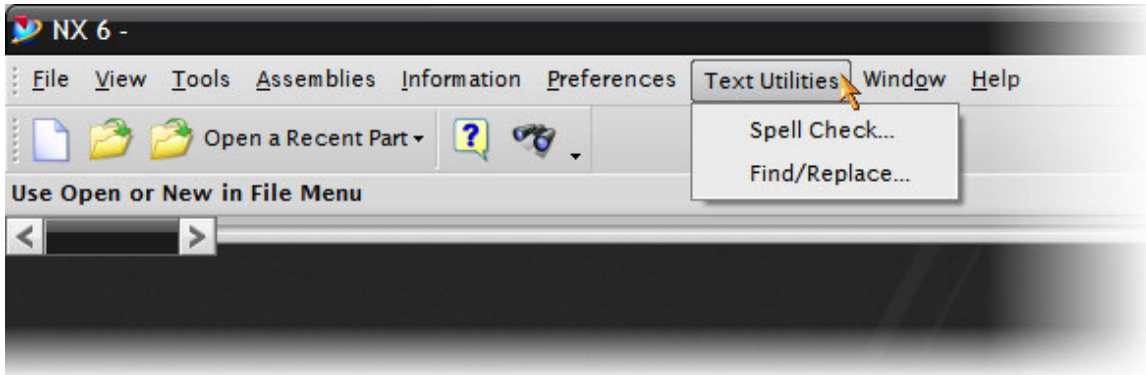
    if not "%1" == "" start %UGII_ROOT_DIR%\ugraf.exe -ret:%1%
    if "%1" == "" start %UGII_ROOT_DIR%\ugraf.exe
```

The path 'U:\TextUtilities\UgNx6\Vendor' is highlighted in yellow.

Save the changes to the file.

To launch the **Text Utilities** application, double-click the file **SeaUG.bat**. NX6 should now start.

With NX6 started, you should see a menubar option:



And a toolbar:

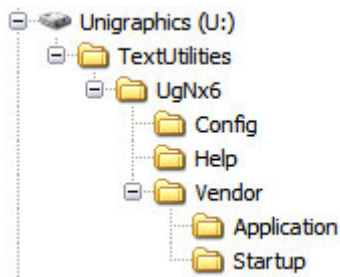


Integrated Application

Refer to this method when you want to integrate **Text Utilities** into your own customized environment for NX.

Extract the contents of the ZIP file (TextUtilities_UgNx6.zip) to a location of your choice.

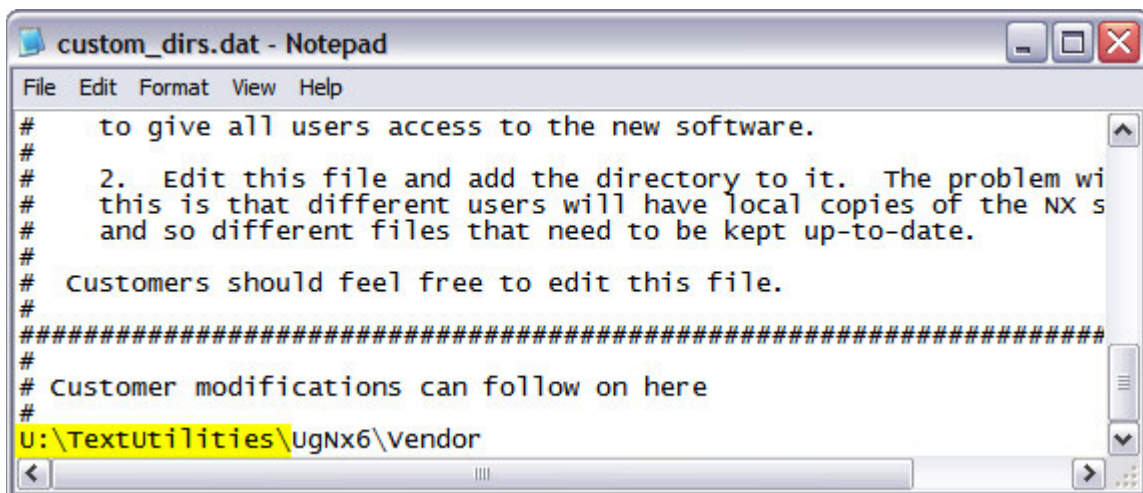
In this example, it has been unzipped to the folder **U:\TextUtilities**, creating the folder structure as indicated below:



The **Help** folder contains the documentation for **Text Utilities** in the form of a CHM file. Double-click the file to launch. If the file fails to open, it is the result of a window's security patch. Copy the CHM file to a local drive and it will open.

Browse to the folder where your **custom_dirs.dat** file is located and open the file for editing. Replace the highlighted section in the image below with the location you have unzipped the files to.

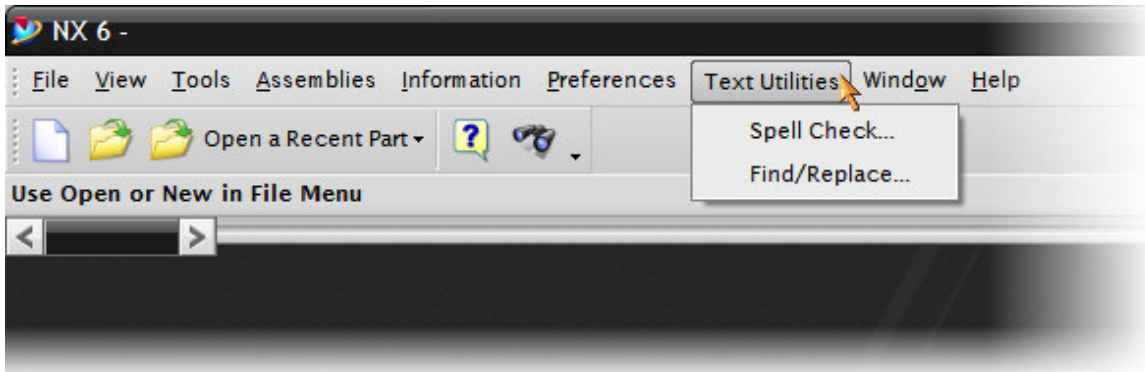
Note: The **custom_dirs.dat** is located in the folder defined by the environment variable **UGII_CUSTOM_DIRECTORY_FILE**. This environment variable is generally defined in the **ugii_env.dat** file.



Save the changes to the file.

Launch NX6.

With NX6 started, you should see a menubar option:



And a toolbar:



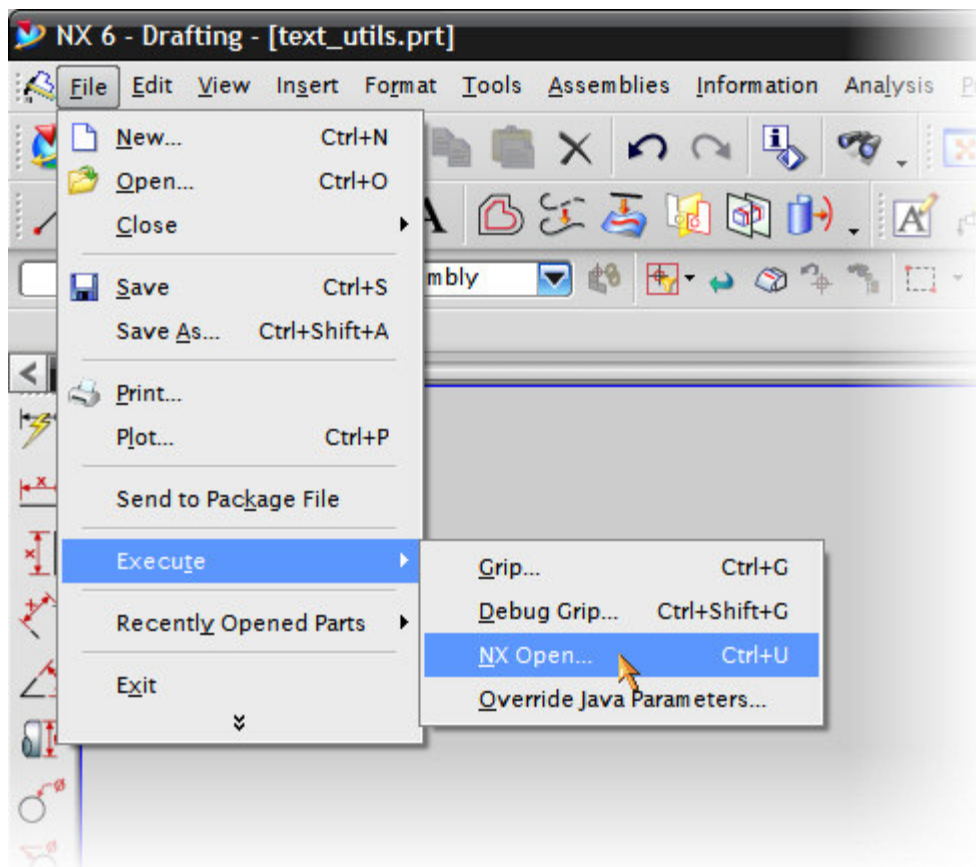
Execute Only

Where appropriate, you can launch the **Text Utilities** application directly from within NX6, without using either the menubar option or toolbar.

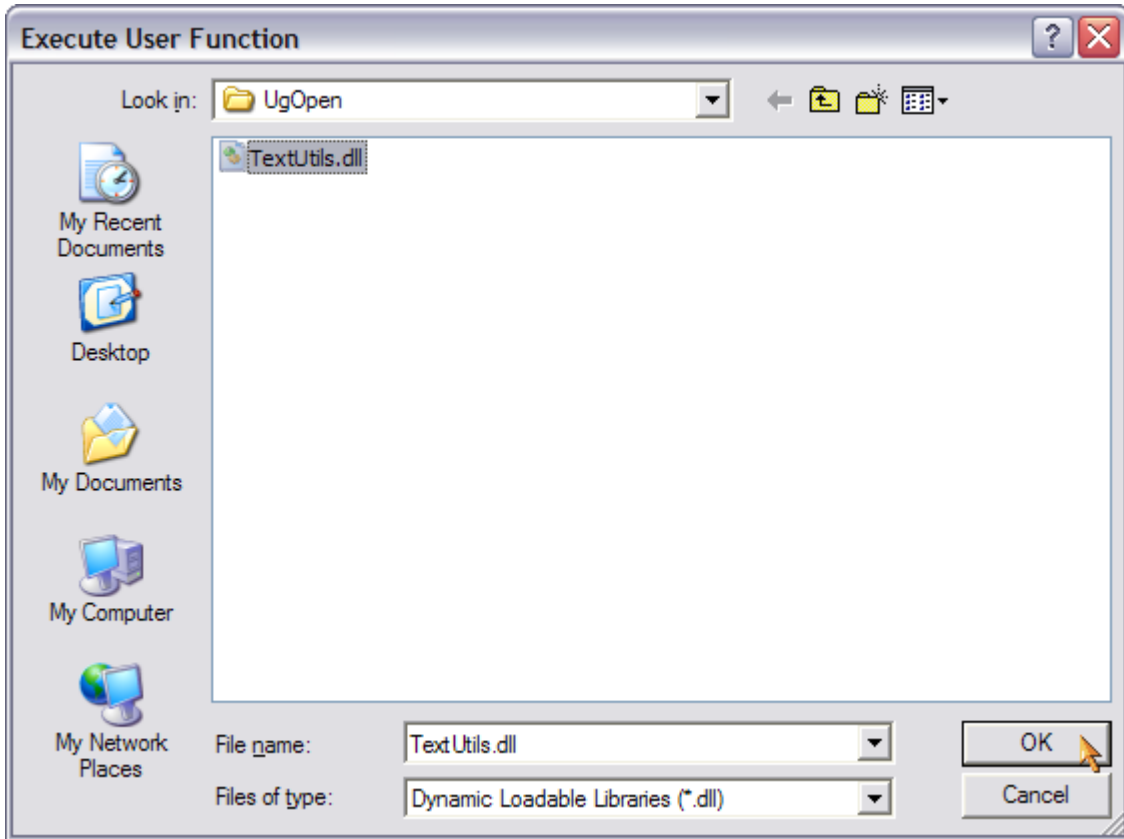
Extract **TextUtils.dll** from the ZIP file (TextUtilities_UgNx6.zip) to a location of your choice.

Launch NX6.

Use **File->Execute->NX Open...**



Browse to the folder where **TextUtils.dll** was extracted to and click **OK** to launch ...



Choose your option ...

